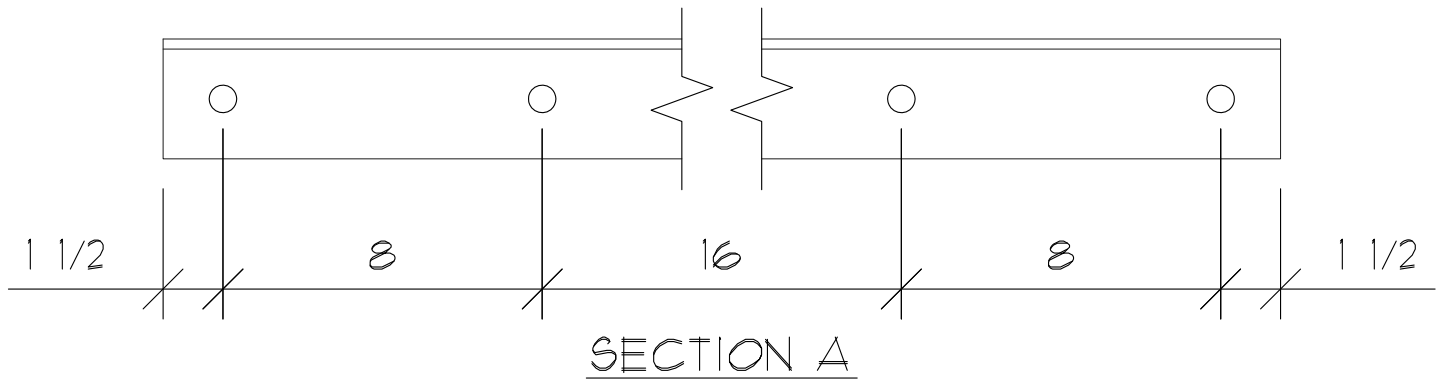
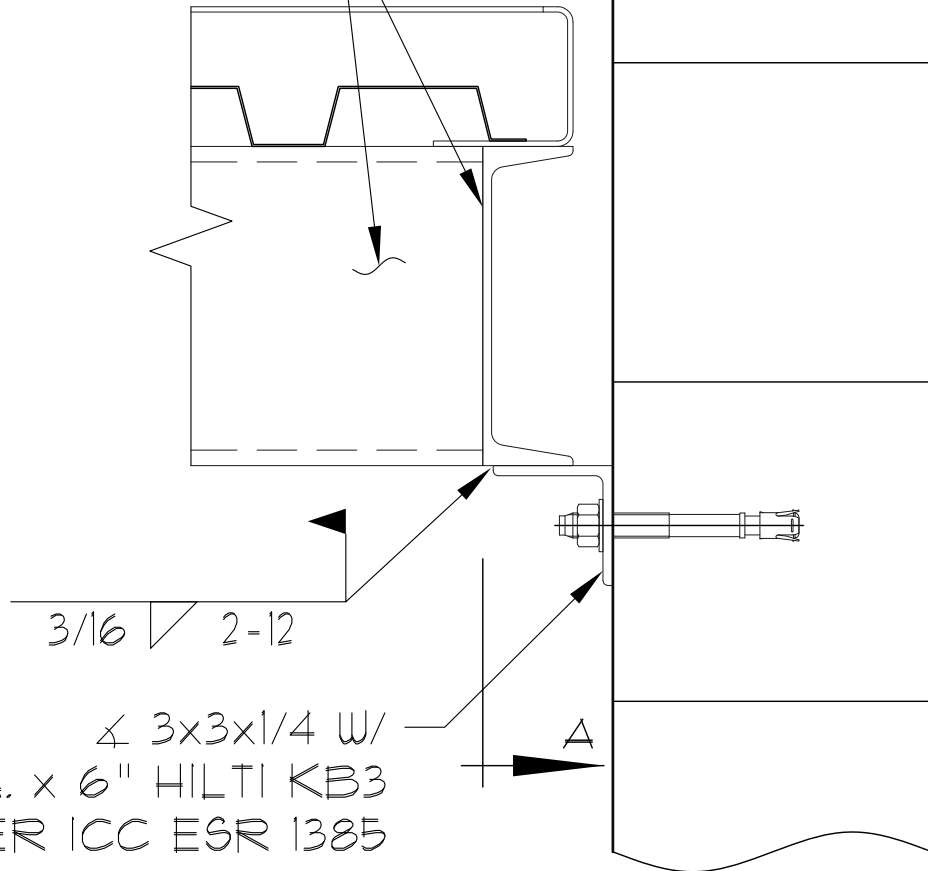


SEE L500 FOR LANDING CONSTRUCTION



FULLY GROUTED CMU WALL (BY OTHERS)

LANDING CHANNEL
C8x11.5# (UNO)



3/16 2-12
∠ 3x3x1/4 W/
5/8" DIA. x 6" HILTI KB3
INSTALL PER ICC ESR 1385

LEDGER ANGLE CONNECTION (CMU)



PACIFIC STAIR
CORPORATION®

TYPE: CONC. FILLED

SCALE: NONE

DETAIL NO. L514